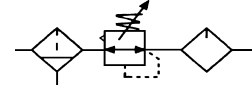


PNEUMATIC

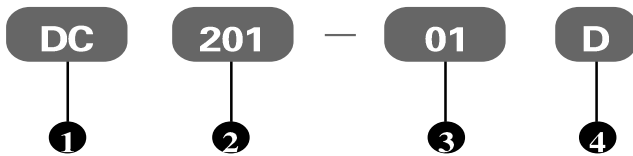
Filter Regulator+Lubricator

Specification:

| | | | | |
|------------------------------|-------------------|--------------------|--------------------|-------------|
| Type | DC101-M5,01 | DC201-01,02,03 | DC401-03,04,06 | DC601-06,08 |
| Port size G | M5 · 1/8" | 1/8" · 1/4" · 3/8" | 3/8" · 1/2" · 3/4" | 3/4" · 1" |
| Gauge thread G | M5 | 1/8" | 1/4" | |
| Fluid | Compressed Air | | | |
| Operating pressure range MPa | 0.15~0.85 | | | |
| Max.Flow rate L/min | 500 | 1700 | 3500 | 11500 |
| Ambient temperature °C | -10~60 | | | |
| Filter precision | Standard : 40 μ m | | | |
| Structure | Overflow type | | | |
| Guard cup | - | ● | ● | ● |

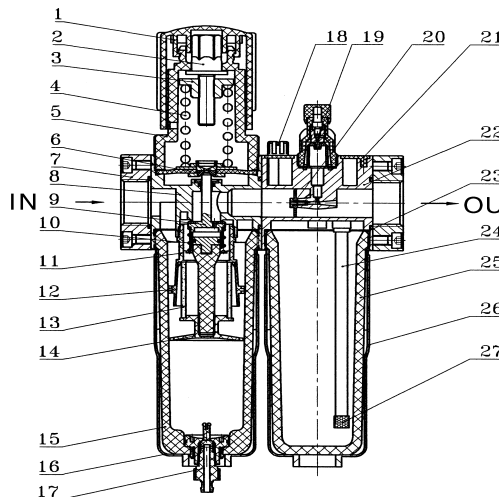


How to order:



| | |
|---|---|
| ① | AC Filter Regulator+Lubricator |
| ② | Type: 101,201,401,601 |
| ③ | Port size: M5,01:G1/8",02:G1/4",03:G3/8",04:G1/2",06:G3/4",08:G1" |
| ④ | □: Differential pressure drain, D: Auto-drain; |

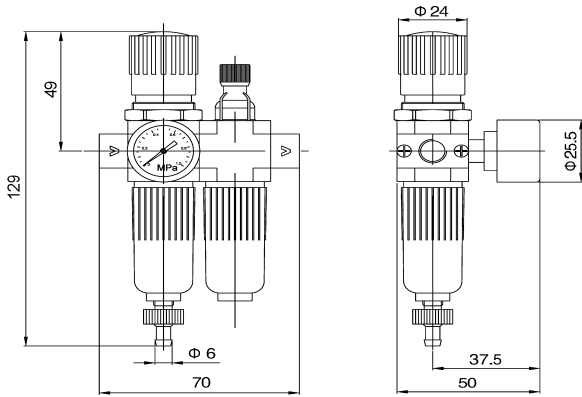
Inner structure drawing:



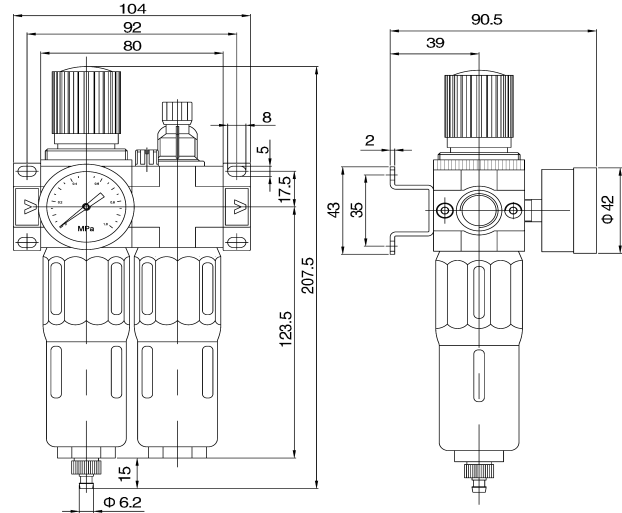
| No | code | No | code |
|----|------------------------|----|-----------------------|
| 1 | Adjustable button | 15 | Water cup |
| 2 | Adjustable launch | 16 | Guard cup |
| 3 | Nut | 17 | Drainer |
| 4 | Main adjustable spring | 18 | Plug |
| 5 | Valve cover | 19 | Oil window component |
| 6 | Diaphragm | 20 | Damping fin |
| 7 | Connecting block | 21 | Decorative cover |
| 8 | FR body | 22 | Lubricator valve body |
| 9 | Cartridge | 23 | O-ring |
| 10 | Cartridge spring | 24 | Oil tube |
| 11 | Impeller | 25 | Oil cup |
| 12 | Filter core | 26 | Oil cup block |
| 13 | Barrier board | 27 | Filter core |
| 14 | Water cup | | |

Dimension(mm):

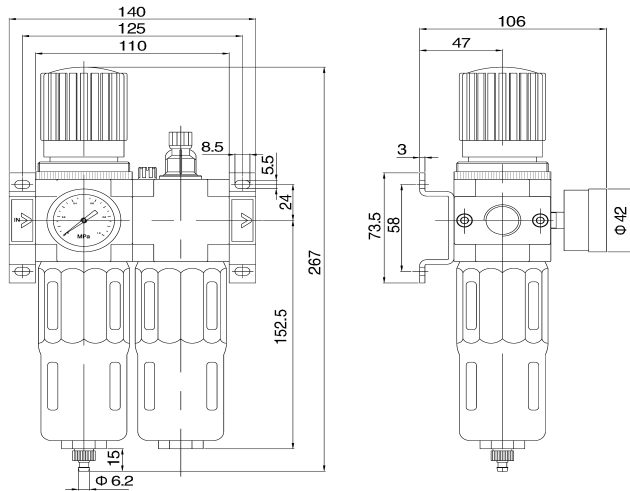
■ DC101-M5、01



■ DC201-01、02、03



■ DC401-03、04、06



■ DC601-06、08

